



© HHLA

HAMBURG, YOUR PORT!



Port of Hamburg





CONNECTED THROUGHOUT THE WORLD

For over 830 years, all types of goods have been handled in the Port of Hamburg. Its inland location having direct access to the open sea, the high quality of all the work done, and its ready-access to countless markets, have always convinced its customers of the port's efficiency.

Yet the world economy is in transition. Along with demographic change, the continual progress of digitalization and automation are changing the working environment for good. Whereas the focus of political action is on climate protection, new propulsion technologies and supply chain reliability, consumer purchasing and investment decisions are increasingly influenced by sustainable corporate operations.

Especially in times of crises it is abundantly apparent just how essential reliable supply chains are for producers, shippers, logistics service providers and in the last resort, for end consumers too.

**Here, you have a strong and reliable partner –
the Port of Hamburg.**



... 1.

LOCATED IN THE HEART OF EUROPE

The Port of Hamburg has always been one of Europe's logistics hubs and industrial centres. Its prominent downstream location makes it the ideal cargo transshipment service provider saving valuable resources such as emissions, time and money.

Via the Elbe, the Hanseatic port is directly linked with the Kiel Canal, the world's most heavily used artificial waterway, and via the North Sea with all the world's seaports. It is the perfect transshipment hub for cargoes needing to quickly and reliably reach markets in Germany, Central and Eastern Europe.

This formidable, unique combination enables companies to not only reduce transport costs and CO₂ emissions, but also save on one vital logistics parameter: time. One additional advantage of the port is that one-third of the cargoes handled remain in the Hamburg Metropolitan Region to be further processed or consumed here.

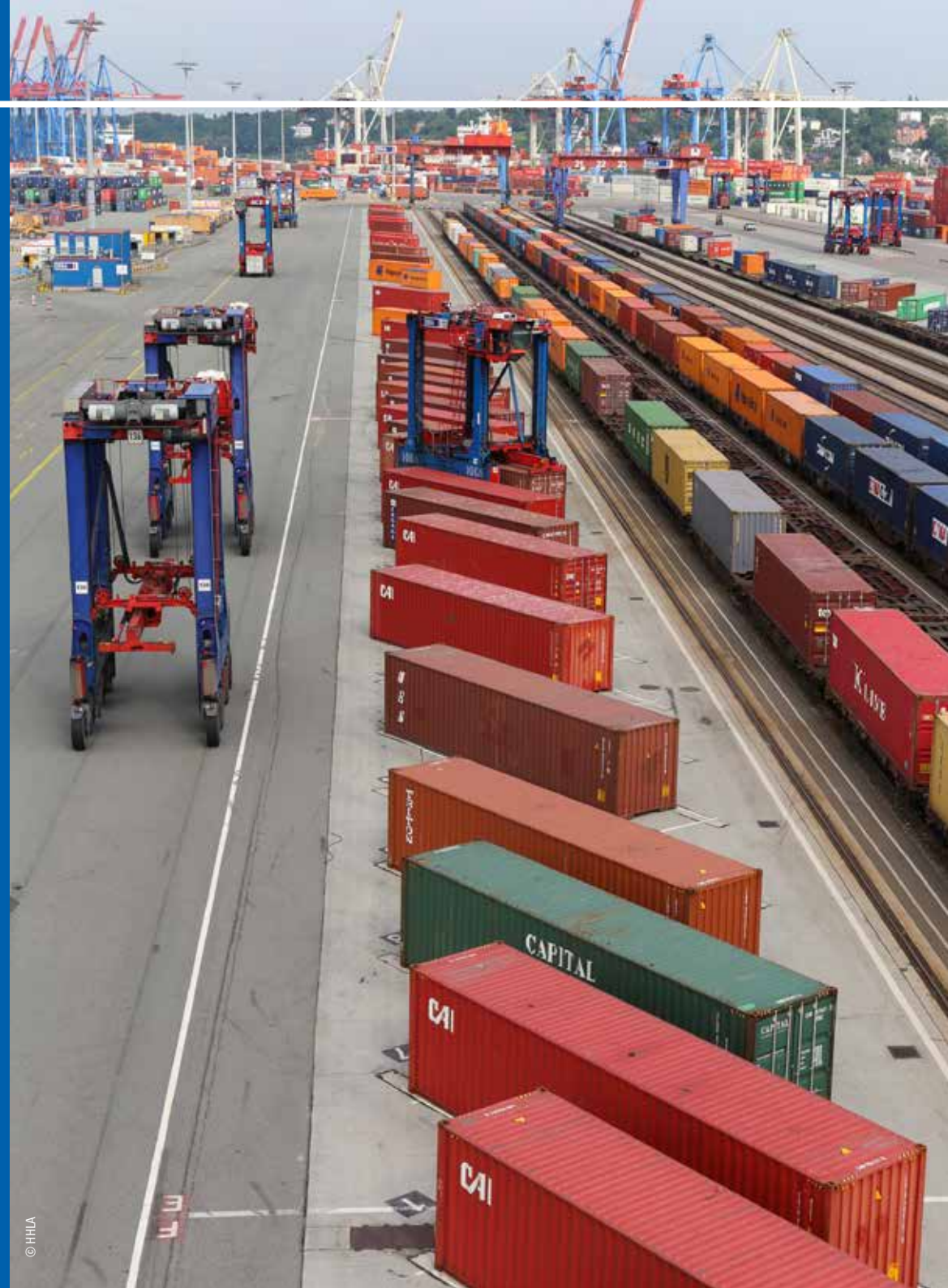


SUPERBLY INTEGRATED

The Port of Hamburg is closely connected with the hinterland via rail, road and waterways.

The well-developed rail network with over 300 kilometres of tracks operated by the Port Railway ensures efficient and low-CO₂ transport. The daily total of more than 200 trains in operation here speaks for itself: in terms of volume handled, the Port of Hamburg is Europe's busiest rail port. Half of all tonnage bound for the hinterland is already transported by rail, therefore maintaining and expanding this essential infrastructure is a high priority in transport policy for both the city and the region.

Hamburg, furthermore, is a hub on the German autobahn network, making it easily accessible by road. The increasing number of goods to and from the hinterland is also transported by low-emission inland waterway vessels along numerous waterways.



... 3.

SUSTAINABLE TRANSHIPMENT CENTRE

The Port of Hamburg is well on the way towards climate neutrality. Container Terminal Altenwerder, for example, has been rated climate-neutral ever since 2019, making it the first world's cargo-handling facility with the special certificate. Companies based in the port are now relying on low-emission means of transport such as electric vehicles, and state-of-the-art power supply networks. The existing wind power and photovoltaic equipment efficiently supplies all parties with clean energy.

The Port of Hamburg is seen as one of the pioneers in introducing facilities for onshore power supply. Established for years by the cruiseship sector, this technology will be available to vessels berthing at container terminals in the near future as well.

The plan is to reduce greenhouse gases and pollutants arising from cargo handling and logistics processes to achieve CO₂ neutrality by 2040. In doing so, the Port of Hamburg will be making a decisive contribution towards decarbonizing supply chains and the economy generally.



4.

IDEAL OPPORTUNITIES FOR DEVELOPMENT

With a land area of 4,300 hectares, the Port of Hamburg is Germany's largest integrated port, trading and industrial zone, offering companies a sectoral mix fit for the future, plus highly-trained personnel. The port enjoys great support from the city's politicians and administrators, who, when allocating land, already attach importance to new and innovative companies and industries settling in Hamburg with the hopes that they will contribute towards the city's high added value and readiness for the future. This has been a major factor in the development of the 'Steinwerder Süd' and 'Sustainable Energy Hub' projects. The Port of Hamburg is therefore an attractive base, not just for the maritime and logistics industries, but also for aviation, consumer goods, vehicle manufacturing and energy supply companies. It is also proving to be a competent partner for a vibrant, modern start-up scene. This is playing its part in developing tomorrow's innovations – pooled in the 'Digital Hub Logistics' or 'homePORT' projects, among others.

With its broad range of vocational training and its high quality of life, the City of Hamburg along with its Metropolitan Region, attracts a large number of experienced personnel.

Visualisation of a possible future use of the Steinwerder Süd site.

... 5.

A PORT FOR ALL SEASONS

The Port of Hamburg meets its customers' requirements. Its broad range of services as an all-purpose port allows it to offer optimal freight handling solutions. General cargo, whether conventional or in containers, can be easily loaded and discharged. The same applies to dry and liquid bulk cargoes.

Service companies, especially those providing packing, lashing and repairs, are an inseparable element of the port. Specialist service providers ensure quick and uncomplicated imports and exports. This makes the Port of Hamburg uniquely attractive for trade and industry, not only in the raw materials sector, chemicals, metals, energy and agricultural products, but also for shipbuilding and engineering companies and those engaged in further processing.

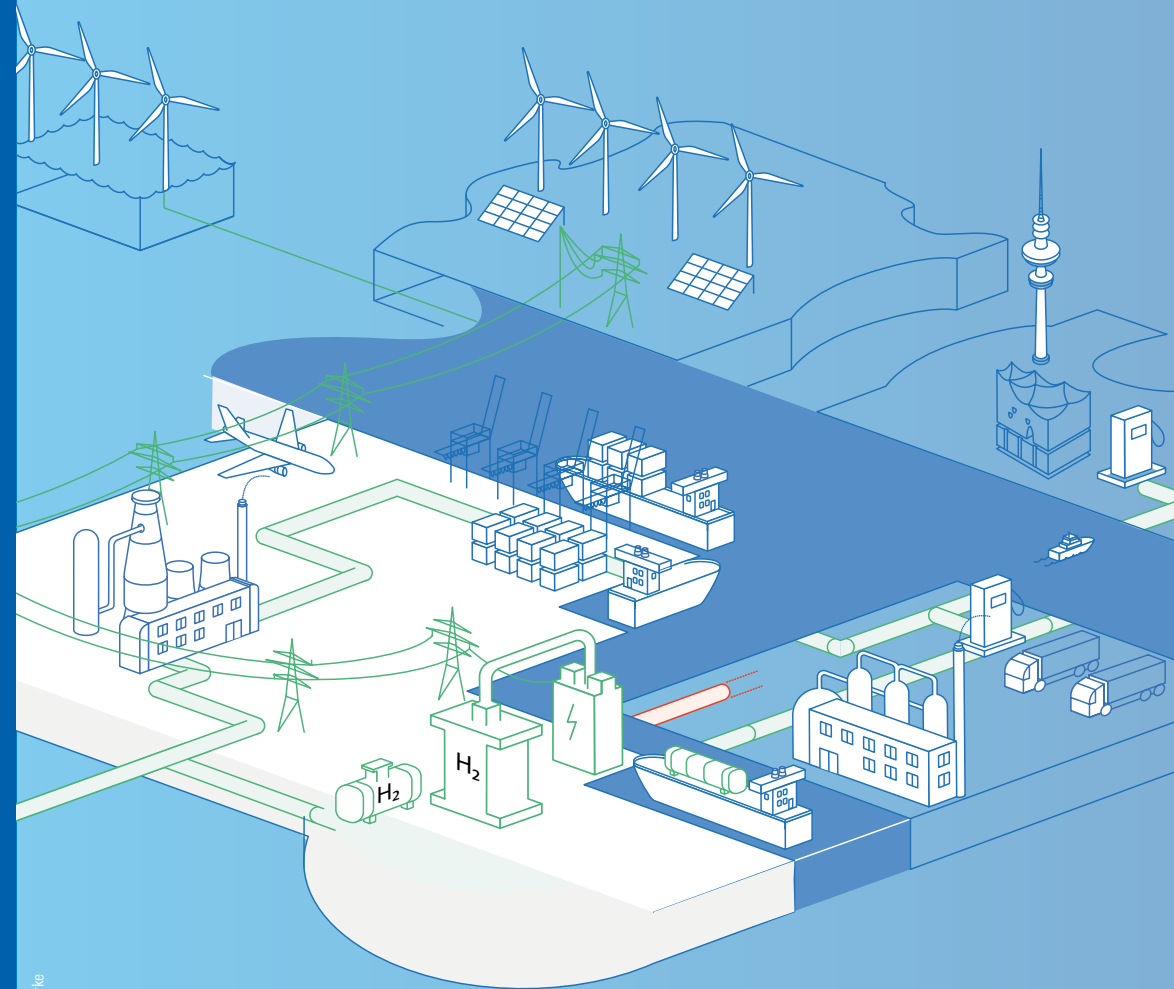
In addition, numerous German shipping companies are based in Hamburg – and several international shipping companies have their German and European head offices here. Countless logistics service providers look after storage and seamless transport of goods. Its cruise terminals also make Hamburg an attractive 'turnaround port' for the cruise industry.



ENERGY HUB WITH PROSPECTS

With a large number of initiatives and projects, Hamburg has become a national hotspot for the hydrogen economy. The city combines policy opportunities of the current green hydrogen market ramp-up with climate protection. The goal is to establish a self-sustaining green hydrogen economy by 2035. The Port of Hamburg and its industry will play a key role in the energy transition in Germany and Europe. Green hydrogen will decarbonize the port, industrial, logistics and aviation sectors in Hamburg.

The Port of Hamburg is the perfect location to reflect the entire hydrogen value chain with its short distances, good connections and flexible, scalable infrastructure. This also includes the import of green hydrogen. Several companies have already announced plans to set up corresponding infrastructure in the port area. The aim is not only to supply local businesses with hydrogen, but also to ensure distribution to other customers via emerging regional and supra-regional networks, thus establishing Hamburg as a hydrogen hub in the north.





... 7.

EFFICIENCY THROUGH DIGITALIZATION

Digitalization is ensuring more efficient and rapid processes of the supply chains around the port. From the development of a digital port twin to the application of Artificial Intelligence: digital technologies are everywhere.

One great example is the Hamburg Vessel Coordination Center (HVCC). In close coordination with the Nautical Control Center it coordinates ship traffic efficiently and sustainably with the help of digital processes. HVCC is continuously working on connecting stakeholders, bundling information and processing data.

In addition, across the entire port various data systems with sensors ensure intelligent networking of ship, rail and road traffic. Official procedures such as customs clearance are now in several respects automated. With the Border One-Stop Shop (BOSS), all import checks will be pooled at one location and can therefore be operated more efficiently.

Recording, processing and linking of more data and messages is making port processes increasingly efficient and more reliable and economical for the customer. The Port of Hamburg is well on its way to becoming a completely smart port, for the benefit of both its customers and the environment.



HAMBURG, YOUR PORT!

The players in the Port of Hamburg are not simply aware of the changes in the world economy, they are part of the whole process and are making progress in many sectors. The Port of Hamburg therefore offers optimal conditions for the import and export of goods, sound conditions for logistics service providers and industry, along with attractive living and working conditions.

In future, the Port of Hamburg will be not simply a central hub for cargo flows, energy supply and fuels; from 2040, it will on balance be climate-neutral. It will assert its position as one of Europe's leading logistics hubs, remaining relevant for cargo handling, cruise shipping and its great variety of both traditional and future-oriented companies. The Port of Hamburg welcomes with open arms to start-ups the opportunity to apply technical innovations at an early stage and test them under real conditions.

The Port of Hamburg remains a reliable partner, set to become Innovation Port 2040. And above all it is: Hamburg, Your Port!

CONTACT

In case of inquiries please contact us:

info@portofhamburg.com

+49 40 377090

portofhamburg.com

[in](#) [@](#) [@portofhamburg](#)

Hafen Hamburg Marketing e.V.

Pickhuben 6 – 20457 Hamburg