

- Boosting employment in Hamburg, Schleswig-Holstein and Lower Saxony
- Generating added value of 21.8 billion euros nationwide
- Future-orientated progress on quality and efficiency with the smartPORT scheme

Port-dependent jobs 2014

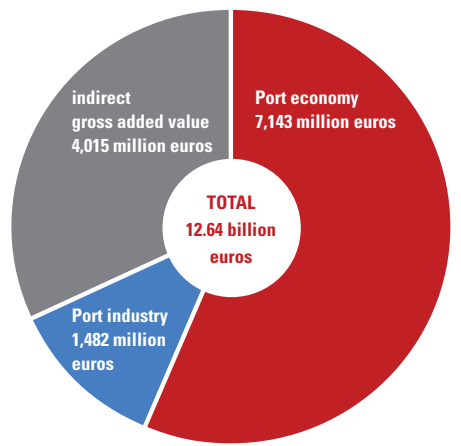
Total number of jobs directly and indirectly dependent on port functions

In Germany nationwide	268,689
In Hamburg	129,761
In Schleswig-Holstein	13,884
In Lower Saxony	11,917
In Hamburg metropolitan region altogether	155,562

Added value impact 2014

Added value directly and indirectly generated by the Port of Hamburg

In Germany nationwide	21.8 billion euros
In Hamburg	12.6 billion euros



Emissions reduction with smartPORT energy

Very long lay times in port of cargo and cruise ships sometimes mean that such vessels are largely responsible for damaging emissions in the port. Since the two existing cruise terminals are located so close to residential areas, it is here that a reduction in emissions will be sought more swiftly than in the remainder of the port. In Hafencity the HPA has created the shore infrastructure to facilitate power supply for ships via an LNG-hybrid barge. A permanent shore power supply point enters service in Altona in summer 2016. This produces the conditions essential for a substantial reduction in emission of such atmospheric pollutants as nitrogen and sulphur oxides and fine dust, as well as carbon dioxide. Noise emissions should also be significantly reduced.

Port of Hamburg Marketing (HHM)

Exploiting the effects of synergies, combining resources and being present in important markets, Port of Hamburg Marketing's worldwide presence is the basis for HHM's aim, to successfully market and position the Port of Hamburg internationally. As the central contact point, HHM keeps its German and international port customers abreast of the performance potential of the Port of Hamburg from a total of 14 branches worldwide. With its wide range of marketing activities, including market research, trade fair participations and briefing events, programmes for expert delegations, publications, press work and Internet services, the association boosts the competitive position of Germany's largest universal port.

- Remain constantly briefed with PORTnews: www.portofhamburg.com/portnews
- Simplify the search for suppliers with PORTlog: www.portofhamburg.com/portlog
- All liner services via Hamburg at a glance: www.portofhamburg.com/linerservices



Port of Hamburg Marketing www.portofhamburg.com

Headquarter
 Pickhuben 6, 20457 Hamburg
 Phone: +49 40 37709 0
 E-Mail: info@hafen-hamburg.de

Offices: Berlin · Budapest · Dortmund · Dresden · Hamburg · Hong Kong · Mumbai · Munich · Prague · Seoul · Shanghai · St. Petersburg · Warsaw · Vienna

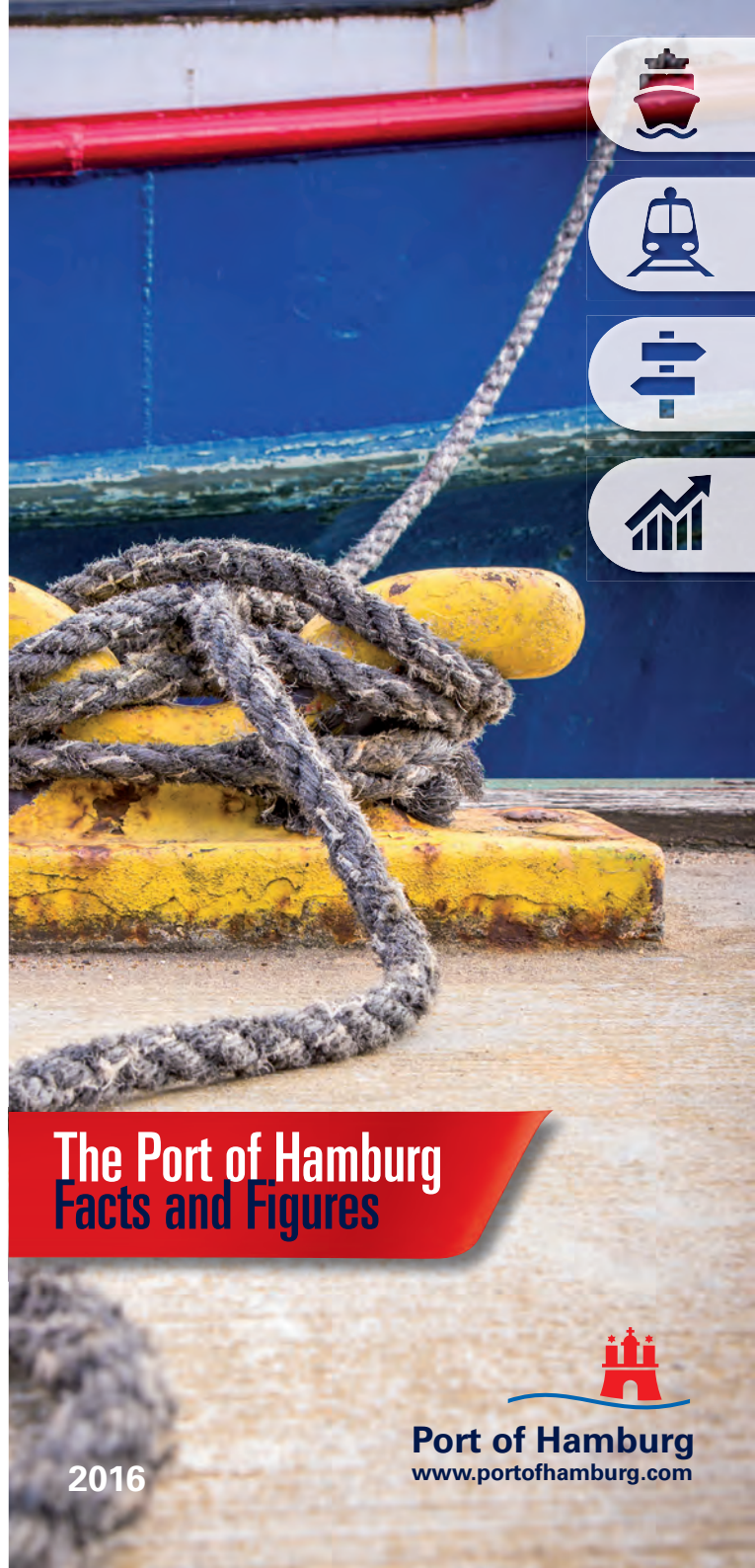
Hamburg Port Authority

The Hamburg Port Authority (HPA) has run future-orientated port management since 2005, being actively engaged wherever efficiency, safety and commercial viability are the aim in the Port of Hamburg. The HPA caters for the port's growing demands with intelligent and innovative solutions. The HPA is responsible for the efficient, sustainable implementation of infrastructure measures in the port that is also sparing of resources. The authority is the point of contact for all enquiries regarding waterside and land infrastructure, the safety and simplicity of ship traffic, of Port Railway installations, and for real estate management. The HPA makes available the areas required for these, and assumes all statutory responsibilities, while providing certain port services.

- For more on the topic smartPORT: www.hamburg-port-authority.de/en/smartport/



Neuer Wandrahm 4
 20457 Hamburg
 Phone: +49 40 42847-0
www.hamburg-port-authority.de/en/



The Port of Hamburg Facts and Figures

2016



Port of Hamburg
www.portofhamburg.com

Theifoto: © powell83 / Fotolia.com

- Germany's largest seaport
- A leading port for trade with China
- 18th largest container port worldwide

Seaborne cargo throughput 2015

Total throughput (in million tons)	137.8	
of which general cargo throughput	92.3	of which bulk cargo throughput 45.5
conventional general cargoes	1.7	grab cargoes 22.3
containerized	90.6	liquid cargoes 14.0
Containers (in million TEU)	8.8	suction cargoes 9.2

Ocean-going ship traffic 2015

Arrivals by ocean-going vessels	8,735
Containerships	4,269
Tankers/bulk carriers	2,756
Cruise ships	146

of which the total number of ultra large vessels with a length of over 330 metres and/or breadth of over 45 metres (AGF) 1,031

Top 10 trading partners 2015

Seaborne cargo throughput (in million tons)		Container throughput (in TEU)	
1 China incl. Hong Kong	23,63	China incl. Hong Kong	2,541,000
2 Russia	12,22	Singapore	436,000
3 Brasil	7,79	Russia	434,000
4 USA	6,08	Finland	350,000
5 Norway	5,89	USA	326,000
6 Singapore	5,67	South Korea	315,000
7 Great Britain	4,38	Malaysia	283,000
8 Sweden	4,24	Sweden	271,000
9 Finland	4,13	Poland	238,000
10 Canada	3,67	India	237,000

Liner network spanning the world

With its dense network of around 120 worldwide liner services, the Port of Hamburg performs an essential role for the foreign trade of Germany and the neighbouring countries of Europe. The large majority of 1,000 seaports worldwide are served directly from Hamburg. Others are served indirectly per transshipment.



- Leading hub for Baltic trade routes
- More than 1,300 freight trains per week
- Germany's second biggest inland port

Rail freight traffic 2015

Total throughput (million tons)	45.8
Container throughput (million TEU)	2.3
Cargo trains	58,300

Inland waterway ship traffic 2015

Gesamtumschlag (in Mio. Tonnen)	12.2
Container throughput (in TEU)	117,000
Number of calls by inland waterway vessels	10,000
Internal port transfers	55,000

Modal Split

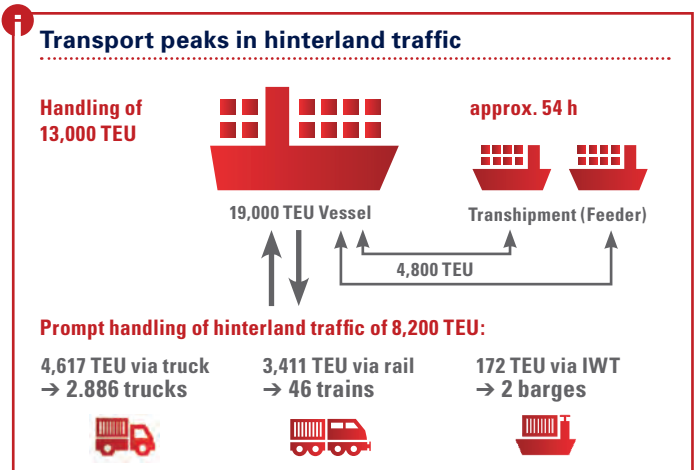
In hinterland traffic (99.9 million tons)	
Rail	45.8 %
Inland waterway vessel	12.2 %
Truck	42.0 %

In container hinterland traffic (5.5 million TEU)	
Rail	41.6 %
Inland waterway vessel	2.1 %
Truck	56.3 %

(Discrepancy in total caused by rounding)

Feeder and short-sea services

Total throughput (million tons)	37.8
Container throughput (million TEU)	3.2



- 280 berths for ocean-going ships
- Intelligent traffic control by innovative IT
- State-of-the-art infrastructure for handling mega-ships

Port area 2015

Total port area	7,145 hectares
Shore area	4,226 hectares
Water area	2,919 hectares
Hafennutzungsgebiet	6,347 hectares
Shore area	3,416 hectares
Water area	2,931 hectares
Port area scheduled for expansion	840 hectares

Port infrastructure 2015

Quay walls for ocean-going ships	43 km
Berths for ocean-going ships	280
of which mega-ship berths (for AGF)	40
Berths on dolphins (for ocean-going ships only)	17
Landing facilities (e.g., ferry terminals)	58
Public roads	130 km
Port Railway sidings	294 km
Bridges: road bridges	90
rail bridges	51
movable bridges	4

Water levels, ship drafts

Tide at Hamburg-St. Pauli indicator	
Mean high tide	Mean sea level + 2.13 metres
Mean low tide	Mean sea level - 1.62 metres
Mean tidal surge	3.83 metres

Permissible ship drafts (fresh water)	
Dependant on incoming tide and exploiting flood surge	15.10 metres
Outward depending on tide	13.80 metres
Irrespective of tide (inbound and outbound)	12.80 metres

Intelligent traffic management thanks to smartPORT logistics

Measurement sensors were installed at key traffic intersections in the port back in 2010. These precisely measure traffic volume, vehicle types and speed. All system data flow into the Port Road Management Center. Yet that is only the beginning of comprehensive traffic management designed to cover all three means of transport – road, rail and water. Productivity improvements of approx. 12 percent have already been achieved during the pilot operation of smartPORT logistics, a project run by HPA, SAP and Deutsche Telekom.